

Register by April 10 &  
Save up to \$200

33<sup>rd</sup> Annual

# TRI-CON

Precision  
Medicine  
Innovation

May 4-5, 2026 | Hotel Nikko | San Francisco, CA

## Entering the Age of AI

### Conference Programs

TABLE OF  
CONTENTS

#### Diagnostics Innovation

- ◆ Drivers of Diagnostics Innovation
- ◆ At-Home and Point-of-Care Diagnostics
- ◆ Direct Access Testing
- ◆ AI-Enabled Diagnostics
- ◆ Infectious Disease Dx
- ◆ Market Access

#### Artificial Intelligence

- ◆ AI Venture and Partnering
- ◆ AI-Driven Biomarkers
- ◆ Computational Pathology
- ◆ Agentic AI: Discovery to Healthcare
- ◆ AI in Precision Oncology
- ◆ AI for Multi-Omic Analysis

#### Precision Medicine

- ◆ CEOs of Precision Medicine
- ◆ Precision Medicine in the Age of AI
- ◆ Precision Oncology
- ◆ Liquid Biopsy: MRD, MCED, and Biomarkers
- ◆ AI and Precision Med Beyond Oncology
- ◆ AI-Powered Drug Development

#### Featured Speakers



Lisa Alderson  
CEO, Adela



William G. Morice II  
CEO, Mayo Clinic  
Laboratories



Mara G. Aspinall  
Partner, Illumina  
Ventures



Cecilia Schott  
Head, Global  
Precision  
Diagnostics, GSK



Ajit Singh  
CEO, Harbinger  
Health



Julia Cheek  
CEO, Everlywell



Jenny Rooke  
Managing  
Director, Genoa  
Ventures



Samraat Raha  
CEO, Myriad  
Genetics

33<sup>rd</sup> Annual

# TRI-CON

Precision  
Medicine  
Innovation



May 4-5, 2026 | Hotel Nikko | San Francisco, CA

## Table-of-Contents

[VIEW](#) About TRI-CON 2026

[VIEW](#) Sponsorship & Exhibit Opportunities

[VIEW](#) Plenary Keynote

[VIEW](#) Hotel & Travel

[VIEW](#) Registration Information

“

The TRICON is a great forum for sharing trends and scientific methods in Medicinal Therapies! ”

*Solution Consultant, Elsevier, LTD*

## Conference Programs

### Diagnostics Innovation

- ◆ Drivers of Diagnostics Innovation
- ◆ At-Home and Point-of-Care Diagnostics
- ◆ Direct Access Testing
- ◆ AI-Enabled Diagnostics
- ◆ Infectious Disease Dx
- ◆ Market Access

### Artificial Intelligence

- ◆ AI Venture and Partnering
- ◆ AI-Driven Biomarkers
- ◆ Computational Pathology
- ◆ Agentic AI: Discovery to Healthcare
- ◆ AI in Precision Oncology
- ◆ AI for Multi-Omic Analysis

### Precision Medicine

- ◆ CEOs of Precision Medicine
- ◆ Precision Medicine in the Age of AI
- ◆ Precision Oncology
- ◆ Liquid Biopsy: MRD, MCED, and Biomarkers
- ◆ AI and Precision Med Beyond Oncology
- ◆ AI-Powered Drug Development



# Connecting Executives, Investors, Entrepreneurs, and Research Thought Leaders to Enable Innovation

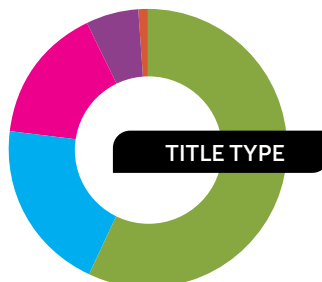


Join us for an exclusive gathering of senior-level investors, pharma executives, entrepreneurs, research thought leaders, and innovators at the 33rd Annual TRI-CON. Connect with investors and partners at intimate networking sessions; gain strategic insights on funding activities, business development, and innovation strategies in diagnostics, precision medicine, and AI from industry-led panels; and hear candid perspectives and business recommendations from key opinion leaders during dynamic fireside chats. Building on a 30+ year track record, TRI-CON is positioned as the premier meeting place for key stakeholders to foster meaningful connections, acquire valuable strategic insights, and drive innovation and collaboration. Returning to San Francisco in 2026!

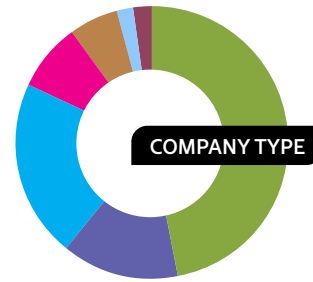


2025

## Attendee Demographics



57% Executive  
20% Scientist  
16% Sales & Marketing  
6% Manager  
1% Other



47% Biotech/Commercial  
14% Pharma  
21% Healthcare  
7% Academic  
2% Services  
2% Financial  
2% Societies

# Sponsor & Exhibit Opportunities

Exhibitors will have an opportunity to enjoy in-person and virtual facilitated networking opportunities with qualified delegates, making it the perfect platform to launch a new product, collect feedback, and generate new leads from around the world.

## How Sponsoring/Exhibiting Promotes & Benefits Your Business:

- Generate qualified leads consisting of actual decision-makers from within your focus area
- Network with senior-level professionals and generate leads during dedicated exhibit hall hours, lunches, etc.
- Promote your company's participation in the Event Materials—including contact information and 50-word description
- Increase your brand awareness and drive traffic to your website through our various marketing campaigns
- Increase dedicated networking time in the exhibit hall

## Podium Presentations

Available within Main Agenda!

Showcase your solutions to a guaranteed, targeted audience through a 12- or 25-minute presentation during a specific conference program or lunch. Package includes exhibit space, onsite branding, and access to cooperative marketing efforts by CHI. For the luncheon option, lunches are delivered to attendees already seated in the main session room. Presentations do sell out early.

## One-on-One Meetings

Work with us to identify your target prospects and we will schedule meetings for you. Think of us as your inside sales team with all your hottest leads in close reach. Opportunities sold on a very limited basis.

## Invitation-Only Dinner/Hospitality Suite

Sponsors will select their top prospects from the conference preregistration list for an evening of networking at the hotel or at a choice local venue. CHI will extend invitations, conduct follow-up, and confirm attendees. The evening will be customized to meet with your specific objectives.

## How will CHI ensure that delegates visit the exhibit hall?

- Welcome receptions
- Refreshment breaks
- Raffles and more

## Exhibit Hall Networking Reception Sponsorship

Your company will be recognized as the exclusive sponsor of the Welcome Reception on day 1 to be held in the Exhibit Hall. Use this lively social occasion to launch a new product or solution and drive delegates to your exhibit booth.

## Additional sponsorship & branding opportunities include:

- Lanyards
- Foot Trails
- Keynote Chair Drop
- Tote Bag Exclusive Sponsorship
- Water Bottles
- Conference Notebooks
- Tote Bag Insert
- Chair Drop in Session Room



For additional information, please contact:



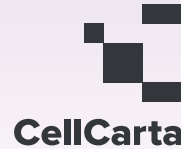
## Jon Stroup

Lead Business Development Manager  
617-838-5006  
[jons@healthtech.com](mailto:jons@healthtech.com)



# Thank You to Our Sponsors

## CORPORATE SPONSORS



## CORPORATE SUPPORT SPONSORS



## MEDIA PARTNERS

Official Publication

**DiagnosticsWorld**

Lead Sponsoring Publications

**Bio-IT World**

**CLINICAL RESEARCH NEWS**  
Clinical Trials to the Clinic

**GEN**  
Genetic Engineering & Biotechnology News

**INSIDE PRECISION MEDICINE**

Sponsoring Publications



Pharmaceutical Outsourcing

**TheScientist**  
EXPLORING LIFE. INSPIRING INNOVATION

Sponsoring Associations

**bc Biocompare** labcompare  
The Buyer's Guide for Life Scientists

May 4-5, 2026



# Plenary Keynote Program

MONDAY, MAY 4

## PLENARY KEYNOTE SESSION: THE AGE OF ARTIFICIAL INTELLIGENCE: PRECISION MEDICINE VENTURE AND INNOVATION

**8:30 Organizer's Welcome Remarks**

**8:35 Chairperson's Remarks**

*Charity Williams, Partner, Cooley LLP*

**8:40 Keynote Introduction** (Sponsorship Opportunity Available)

**8:45 PLENARY KEYNOTE PANEL DISCUSSION: Tech Titans, Investors, and Innovators: How AI Is Driving Precision Medicine Forward**



*Moderator: Charity Williams, Partner, Cooley LLP*

Join leading venture investors and AI innovators as they explore how artificial intelligence is driving the next generation of personalized healthcare. This discussion will uncover emerging investment theses and the critical role of partnerships between technology platforms, startups, and providers in shaping the future of precision medicine.

**Panelists:**

*Milad Alucozai, DrPH, Co-Founder & General Partner, Pamir Ventures*

*Noosheen Hashemi, Founder & CEO, January AI*

*Ujjwal Ratan, Head of ML and Data Science, Healthcare & Life Sciences, Amazon Web Services*

*Joe Shonkwiler, MD, Lead, Healthcare and Life Sciences, Venture Capital BD, Google*

## PLENARY KEYNOTE SESSION

**3:50 Chairperson's Remarks**

*Mara G. Aspinall, Partner, Illumina Ventures; Professor of Practice, Arizona State University*

**3:55 Keynote Introduction** (Sponsorship Opportunity Available)

**4:00 Presentation to be Announced**

**4:30 PLENARY KEYNOTE PANEL DISCUSSION: The Tipping Point: CEOs on the Future of Precision Medicine**



*Moderator: Mara G. Aspinall, Partner, Illumina Ventures; Professor of Practice, Arizona State University*

As precision medicine accelerates across oncology, population health, and consumer diagnostics, industry leadership is critical to translating innovation into real-world impact. In this session, Mara Aspinall hosts a CEO panel for a candid discussion on the technologies reshaping early detection, decentralized testing, genomic architecture analysis, and the expanding role of AI in powering more accurate and accessible care.

**Panelists:**

*Lisa Alderson, CEO, Adela, Inc.*

*Julia Cheek, CEO and Founder, Everlywell*

TUESDAY, MAY 5

## PLENARY KEYNOTE SESSION

**8:30 Chairperson's Remarks**

*Mara G. Aspinall, Partner, Illumina Ventures; Professor of Practice, Arizona State University*

**8:35 Keynote Introduction** (Sponsorship Opportunity Available)

**8:40 PLENARY KEYNOTE PANEL DISCUSSION: Intelligence & Impact: The Age of Diagnostic Innovation**



*Moderator: Mara G. Aspinall, Partner, Illumina Ventures; Professor of Practice, Arizona State University*

Diagnostics is entering a moment of rapid change, fueled by new technologies, evolving patient needs, and the growing influence of AI. In this keynote session, Mara hosts a panel of industry leaders to discuss how they are driving innovation within their own organizations—from advancing early detection to expanding decentralized testing and building smarter, AI-enabled laboratory systems. The conversation will explore the practical steps these leaders are taking today.

**Panelists:**

*William G. Morice II, MD, PhD, President & CEO, Mayo Clinic Laboratories; Professor & Past Chair, Department of Laboratory Medicine and Pathology, Mayo Clinic; Chair, American Clinical Laboratory Association Board of Directors*

*Ajit Singh, PhD, CEO, Harbinger Health*

*Megann Vaughn Watters, Vice President, New Ventures & Strategic Alliances, Labcorp*

*Jenny Rooke, Founder & Managing Director, Genoa Ventures*



# 2026 Featured Speakers



**Lisa Alderson**  
 CEO, Adela



**Ajit Singh**  
 CEO, Harbinger Health



**Mara G. Aspinall**  
 CEO  
 Partner, Illumina Ventures



**William G. Morice II**  
 VP, Global Commercial  
 Precision Medicine  
 CEO, Mayo Clinic  
 Laboratories



**Cecilia Schott**  
 Head, Global Precision  
 Diagnostics, GSK



**Ian McCaffery**  
 Global Head, Precision  
 Medicine, AbbVie



**Jenny Rooke**  
 Managing Director  
 Genoa Ventures



**Samraat Raha**  
 CEO, Myriad Genetics



**Julia Cheek**  
 CEO, Everlywell



**Milad Alucozai**  
 General Partner, Pamir  
 Ventures



**Noosheen Hashemi**  
 CEO, January AI



**Michael Snyder**  
 Director, Personalized  
 Medicine, Stanford



**Amy Summy**  
 Chief Marketing Officer,  
 Labcorp



**Kyle Farh**  
 VP, AI Lab, Illumina



**Joe Shonkwiler**  
 Lead, Healthcare, Venture,  
 Google



**Arturo Loaiza-Bonilla**  
 Co-Founder, Massive Bio



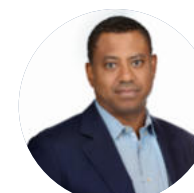
**Mike Zack**  
 CEO, PGxAI



**Ezra Cohen**  
 CMO, Oncology,  
 Tempus Labs



**Alex Aravanis**  
 CEO, Moonwalk  
 Biosciences



**Colin Hill**  
 CEO, Aitia Bio

# 15<sup>th</sup> Annual Diagnostics Innovation

At-Home, Point-of-Care, and Direct Access Testing

May 4-5, 2026



MONDAY, MAY 4

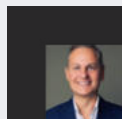
7:30 am Registration Open and Morning Coffee

## PLENARY KEYNOTE SESSION: THE AGE OF ARTIFICIAL INTELLIGENCE: PRECISION MEDICINE VENTURE AND INNOVATION

8:30 Organizer's Welcome Remarks

8:35 Chairperson's Remarks

Charity Williams, Partner, Cooley LLP

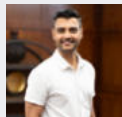
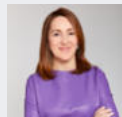
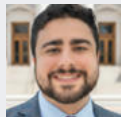


8:40 Turning Diagnostic Innovation into Scalable Reality: An End-to-End CDMO Approach

Dejan Drljaca, CBO, Business, Helio Diag



8:45 PLENARY KEYNOTE PANEL DISCUSSION: Tech Titans, Investors, and Innovators: How AI Is Driving Precision Medicine Forward



Moderator: Charity Williams, Partner, Cooley LLP

Join leading venture investors and AI innovators as they explore how artificial intelligence is driving the next generation of personalized healthcare. This discussion will uncover emerging investment theses and the critical role of partnerships between technology platforms, startups, and providers in shaping the future of precision medicine.

Panelists:

Milad Alucozai, DrPH, Co-Founder & General Partner, Pamir Ventures

Noosheen Hashemi, Founder & CEO, January AI

Ujjwal Ratan, Head of ML and Data Science, Healthcare & Life Sciences, Amazon Web Services

Joe Shonkwiler, MD, Lead, Healthcare and Life Sciences, Venture Capital BD, Google

9:30 Networking Coffee Break with Exhibit Viewing

## EMPOWERED CONSUMER: AT-HOME AND DIRECT ACCESS TESTING

10:10 Chairperson's Remarks

Mickey Urdea, PhD, Founder & Partner, Halteres Associates, LLC

10:15 Diagnostics are Leaving the Lab and the Physicians Behind—Is the Hyperconvenient Testing Ecosystem Ready?

Michael J. Mina, MD, PhD, Chief Medical and Strategy Officer, Truvian

The rapid movement of diagnostics out of traditional laboratories, and outside traditional provider ordering, is transforming how patients access and act on their own health information. In an increasingly hyperpersonalized world, the public is demanding greater convenience, but convenience alone is not enough. A new ecosystem is required to support safe, hyper-convenient testing. This talk discusses what's needed for diagnostics to keep pace with our fast-changing, hyper-personalized ecosystems.

10:30 MB-CasFire: An Engineered CRISPR Enzyme for Diagnostic Applications

James Broughton, PhD, Senior Director, Head of Research, Mammoth Biosciences, Inc.

While CRISPR-based diagnostics offer significant potential, the field remains limited by first-generation enzymes. To address this, Mammoth Biosciences has leveraged our diverse CRISPR protein portfolio and protein engineering expertise to develop MB-CasFire: a highly specific, sensitive, and thermostable enzyme optimized for compatibility with isothermal amplification reactions. By overcoming the limitations of current enzymes, MB-CasFire provides a robust, high-performance platform for CRISPR diagnostic assay development.

10:45 At-Home Access to Diagnostics Testing: DIY Sampling and Shipment or DIY Testing?

Mickey Urdea, PhD, Founder & Partner, Halteres Associates, LLC

At-home access to laboratory quality diagnostic testing has taken two separate paths that don't require patients to visit a clinic. The first is home collection and shipment of samples to a central lab, while the second is to collect samples and perform tests at the patient's home. We will explore the pathways, types of testing involved, methods used, examples of technologies, benefits, issues, and trends.

11:00 PANEL DISCUSSION: Experiences with Home Access to Testing: Where Are We?

Moderator: Mickey Urdea, PhD, Founder & Partner, Halteres Associates, LLC

The panel of experts has different perspectives of home access to diagnostic testing, including from the labs testing home collected samples and from the providers of tools for use at home for DIY collection of samples for shipment or home testing. They will discuss their experiences and innovations and how they believe the access to testing without patient visits to draw stations or clinics will change with time.

Panelists:

Elizabeth M. Marlowe, PhD, D(ABMM), Executive Scientific Director, Head, R&D, Infectious Diseases & Immunology, Quest Diagnostics

Michael J. Mina, MD, PhD, Chief Medical and Strategy Officer, Truvian

Leslie Saltzman, DO, MBA, Vice President, Consumer Health Solutions, Labcorp

11:45 Designing Better Inputs: How ML Tools Are Reshaping Recombinant Protein Development for Diagnostics

Carter Mitchell, CSO, Purification & Expression, Kemp Proteins

For lateral flow teams racing toward clinical validation or scale-up, an unstable or underperforming antigen can derail everything. And yet, protein production is still treated as a black box in too many diagnostics programs. That's changing. New computational tools—ranging from structural modeling to predictive analytics—are giving developers earlier insight into what will express, what will fold, and what will fail. In this session, Dr. Carter Mitchell, CSO of Kemp Proteins, will unpack how bioinformatics, construct design, and process modeling are converging to improve the success rate of complex antigen development.

He'll share lessons from Kemp Proteins' work on pandemic preparedness programs and commercial assays, showing how smarter protein inputs reduce development risk, improve assay performance, and help diagnostics teams prepare for ML-driven optimization down the line. For lateral flow



# 15<sup>th</sup> Annual Diagnostics Innovation

At-Home, Point-of-Care, and Direct Access Testing

May 4-5, 2026

developers aiming for reproducibility, scalability, and future-proof data pipelines, protein design is no longer a downstream concern: it's where strategy starts.

**12:10 pm Networking Luncheon**

**12:50 Networking Dessert Break with Exhibit Viewing**

## FUTURE OF POINT-OF-CARE DIAGNOSTICS

**1:20 Chairperson's Remarks**

*Michael W. Ryan, Partner, McDermott Will & Schulte LLP*

**1:25 Bridging the Lab and the Living Room: The Future of Molecular Diagnostics at the Point of Care**

*Bill Hyun, PhD, Venture Partner, Genoa Ventures*

Dr. William Hyun will explore how next-generation molecular diagnostic platforms are redefining accessibility, accuracy, and affordability in healthcare. Drawing from more than two decades of experience advancing cytometry, genomics, and clinical technologies, he will highlight the convergence of precision lab science with point-of-care and at-home testing. The talk will showcase pathways for translating complex molecular assays into deployable systems that deliver real-world impact.

**1:40 Ensuring Access for Point-of-Care Diagnostics: Addressing Payer Site of Service Restrictions**

*Brock Schroeder, PhD, Vice President, Market Access, Cepheid*

This session will explore one of the key challenges facing developers of POC diagnostics—site of service restrictions that restrict coverage and reimbursement of some POC tests in certain sites of care (e.g., physician offices). While Payers may implement these policies for cost control, they can have unintended consequences for patient care. Attendees will gain actionable insights into the current state of site of service challenges.

**1:55 Demonstrating Value with Point-of-Care Diagnostics: the Right Place, Right Patient, Right Time**

*Mary Beals, Payer Engagement Director, Market Access, bioMerieux*

This session will explore the diverse drivers of value for POC diagnostics. Using respiratory panels as an example, we will define how appropriate POC utilization—in the right place of service, for the right risk-stratified patients at the right time into the disease progression—can prevent care escalation and reduce health care resource utilization.

**2:10 PANEL DISCUSSION: Point-of-Care Molecular Diagnostics: Policy Barriers and Proposed Pathways & Solutions**

*Moderator: Michael W. Ryan, Partner, McDermott Will & Schulte LLP*

Point-of-care molecular diagnostics offer safe, effective testing at the time of treatment. However, policy and reimbursement frameworks often lag behind the science. This panel will explore key barriers limiting broader adoption of POC molecular tests, and outline practical pathways to overcome them. Panelists will discuss real-world experience navigating

reimbursement challenges, investor perspectives on what it takes to build sustainable POC business, and payer viewpoints on value assessment and coverage.

*Panelists:*

*Mary Beals, Payer Engagement Director, Market Access, bioMerieux*

*Brock Schroeder, PhD, Vice President, Market Access, Cepheid*

**2:55 Presentation to be Announced**



**3:20 Networking Refreshment Break with Exhibit Viewing**

## PLENARY KEYNOTE SESSION

**3:50 Chairperson's Remarks**

*Mara G. Aspinall, Partner, Illumina Ventures; Professor of Practice, Arizona State University*

**3:55 Presentation to be Announced**

**4:25 PLENARY KEYNOTE PANEL DISCUSSION: The Tipping Point: CEOs on the Future of Precision Medicine**



*Moderator: Mara G. Aspinall, Partner, Illumina Ventures; Professor of Practice, Arizona State University*

As precision medicine accelerates across oncology, population health, and consumer diagnostics, industry leadership is critical to translating innovation into real-world impact. In this session, Mara Aspinall hosts a CEO panel for a candid discussion on the technologies reshaping early detection, decentralized testing, genomic architecture analysis, and the expanding role of AI in powering more accurate and accessible care.

*Panelists:*

*Lisa Alderson, CEO, Adela, Inc.*

*Julia Cheek, CEO and Founder, Everlywell*

**5:15 Networking Welcome Reception with Exhibit Viewing**

**6:15 Close of Day**

## TUESDAY, MAY 5

**8:00 am Registration Open and Morning Coffee**

## PLENARY KEYNOTE SESSION

**8:30 Chairperson's Remarks**

*Mara G. Aspinall, Partner, Illumina Ventures; Professor of Practice, Arizona State University*

# 15<sup>th</sup> Annual Diagnostics Innovation

At-Home, Point-of-Care, and Direct Access Testing

May 4-5, 2026

## 8:35 PLENARY KEYNOTE PANEL DISCUSSION: Intelligence & Impact: The Age of Diagnostic Innovation



*Moderator: Mara G. Aspinall, Partner, Illumina Ventures; Professor of Practice, Arizona State University*

Diagnostics is entering a moment of rapid change, fueled by new technologies, evolving patient needs, and the growing influence of AI. In this keynote session, Mara hosts a panel of industry leaders to discuss how they are driving innovation within their own organizations—from advancing early detection to expanding decentralized testing and building smarter, AI-enabled laboratory systems. The conversation will explore the practical steps these leaders are taking today.

*Panelists:*

*William G. Morice II, MD, PhD, President & CEO, Mayo Clinic Laboratories; Professor & Past Chair, Department of Laboratory Medicine and Pathology, Mayo Clinic; Chair, American Clinical Laboratory Association Board of Directors*

*Jenny Rooke, PhD, Managing Director, Genoa Ventures*

*Ajit Singh, PhD, CEO, Harbinger Health*

*Megann Vaughn Watters, Vice President, New Ventures & Strategic Alliances, Labcorp*

9:20 Transition to Sessions

## HOW AI IS TRANSFORMING DIAGNOSTICS

### 9:25 Chairperson's Remarks

*Charles Chiu, MD, PhD, Professor, Laboratory Medicine and Medicine/ Infectious Diseases; Director, UCSF Clinical Microbiology Laboratory; Chan-Zuckerberg Biohub Investigator, UCSF School of Medicine*

### 9:30 AI across the Diagnostics Lifecycle: Analytical Precision, Clinical Stewardship, Discovery, and Enterprise Acceleration

*Sivan Bercovici, PhD, CTO & Chief Business Officer, Karius, Inc.*

Karius has built the largest microbial cell-free DNA datasets, increasingly linked to clinical context, enabling AI across the platform. Analytical AI refines identification, quantification, and resistance inference from fragmented DNA. Interpretive AI integrates results with clinical context to guide impactful use. Discovery AI uncovers signals beyond infection, including autoimmune disease activity. Organizational AI enhances engineering, scientific review, and workflows—illustrating Karius's leadership in advancing clinically meaningful, innovative applications of AI.

### 9:45 AI for Real-Time Interpretation of Acute Inflammation: Precision Medicine for Hospital Care

*Timothy Sweeney, MD, PhD, Co-Founder & CEO, Inflammix, Inc.*

Oncology care was transformed by high-dimensional molecular diagnostics to distinguish disease from mimics, stage progression, and guide therapy. Acute care faces similar biological complexity but lacks this structure. This talk examines how AI applied to high-dimensional immune-expression data—using TriVerity as a case study—can bring staging logic to acute illness, turning molecular patterns into real-time insight that supports critical decisions when diagnosis alone is not enough.

### 10:00 AI-Driven Rare Disease Diagnosis

*Laura Li, PhD, FACMGG, CEO, Breakthrough Genomics*

We will present our Virtual Geneticist platform with AI tools transforming genomic interpretation by automating variant prioritization, evidence aggregation, and phenotype matching. Machine learning models integrate literature, population databases, functional annotations, and patient phenotypes to rank pathogenicity at scale. In addition, we use natural-language processing which accelerates curation from reports. Deployed in clinical pipelines, AI significantly reduces turnaround time, supports reanalysis, and can raise diagnostic yield.

### 10:15 AI in Action: Translating Innovation into Everyday Healthcare

*Ellington West, CEO, Sonavi Labs*

### 10:30 Networking Coffee Break with Exhibit Viewing

## INFECTIOUS DISEASE DIAGNOSTICS

### 11:10 Chairperson's Remarks

*Charles Chiu, MD, PhD, Professor, Laboratory Medicine and Medicine/ Infectious Diseases; Director, UCSF Clinical Microbiology Laboratory; Chan-Zuckerberg Biohub Investigator, UCSF School of Medicine*

### 11:15 Integrating Host Response and Metagenomics for Precision Diagnosis of Infections

*Charles Chiu, MD, PhD, Professor, Laboratory Medicine and Medicine/ Infectious Diseases; Director, UCSF Clinical Microbiology Laboratory; Chan-Zuckerberg Biohub Investigator, UCSF School of Medicine*

Combining metagenomic next-generation sequencing (mNGS) with host response profiling can improve diagnostic accuracy in complex clinical cases. RNA host response data collected over a decade of cerebrospinal fluid mNGS testing has been leveraged to generate machine-learning based classifiers for infectious—bacterial, fungal, viral, and parasitic—and non-infectious syndromes. The talk will discuss leveraging these classifiers to enhance diagnosis and treatment for critically ill patients with neurologic illness.

### 11:30 Q-POC: A Portable Sample to Answer High-Plex MDx Device for the Next Generation of Syndromic + AMR Testing at the Point of Need

*Jonathan O'Halloran, PhD, Co-Founder & CEO, QuantuMDx*

With the rapid emergence of anti-microbial resistance and the clear utility of syndromic testing, high multiplex diagnostics are becoming more valued. However, the reimbursement and willingness to pay issues are not changing to match the advancements in technology. Q-POC has been designed to address the cost issues in multiplexing, without compromising on speed, portability, ease of use, and quality.

### 11:45 Infectious Disease Diagnostics: Beyond Pathogen Identification

*Bradley Murray, MBA, CEO & Co-Founder, Delve Bio*

Identifying the causative organism is the most critical task in infectious disease diagnostics. However, that often does not paint the full picture. This talk will outline a framework for what other information infectious disease tests need to deliver to optimally support clinical decision making.

### 12:00 pm PANEL DISCUSSION: Innovation at the Frontiers of Infectious Disease Diagnostics: Advancing Real-World Care

# 15<sup>th</sup> Annual Diagnostics Innovation

At-Home, Point-of-Care, and Direct Access Testing

May 4-5, 2026

*Moderator: Charles Chiu, MD, PhD, Professor, Laboratory Medicine and Medicine/Infectious Diseases; Director, UCSF Clinical Microbiology Laboratory; Chan-Zuckerberg Biohub Investigator, UCSF School of Medicine*

This panel brings together leaders in the field to discuss how emerging technologies are impacting real-world diagnosis of infectious diseases. Panelists will share their perspectives on how metagenomic sequencing is being used clinically, host response profiling can be leveraged for differential diagnosis, and AI can be incorporated into clinical and laboratory settings to improve test accuracy and clinical decision-making.

*Panelists:*


*Esther Babady, PhD, Senior Vice President, Global Medical Affairs, bioMerieux*

*Sivan Bercovici, PhD, CTO & Chief Business Officer, Karius, Inc.*

*Timothy Sweeney, MD, PhD, Co-Founder & CEO, Inflammix, Inc.*

*Ephraim L. Tsalik, MD, MHS, PhD, FIDSA, Vice President & CSO, Infectious Disease & Acute Care, Danaher Diagnostics*

**12:45 Transition to Lunch**

**12:50 LUNCHEON PRESENTATION: Delivering Molecular Sensitivity Anywhere: An Affordable, Easy-to-Use Multianalyte Diagnostic for Resource-Limited Settings**  altriatech

*Tara Dalton, CEO, AltraTech Ltd*

**1:15 Refreshment & Dessert Break with Exhibit Viewing**

## MARKET ACCESS FOR ADVANCED DIAGNOSTICS

**2:00 Chairperson's Remarks**

*Suzanne Belinson, PhD, Vice President, Commercial Markets, Tempus AI*

**2:05 Let's Float All Boats**

*Suzanne Belinson, PhD, Vice President, Commercial Markets, Tempus AI*

What does innovation in Market Access activities look like? There has always been a bit of a roadmap on how labs approach payers for coverage and reimbursement. The question is if that historical roadmap offers the most efficient approach today. The market is primed for collaboration to address issues that are preventing the value of precision diagnostics from being realized. Collaboration should encompass as many actors as possible.

**2:20 Closing Gaps in Coverage: Implementation of State Biomarker Laws**

*Paul Sheives, MS, JD, Vice President, Government Affairs, Myriad Genetics*

**2:35 Talk Title to be Announced**

*Damon Hostin, Head, Global Market Access, Illumina, Inc.*

**2:50 PANEL DISCUSSION: What's Prior Authorization Got to Do with It?**

*Moderator: Suzanne Belinson, PhD, Vice President, Commercial Markets, Tempus AI*

We have been hearing a lot about prior authorization. Is prior authorization really the panacea we are hearing about? In this session we will explore the future of prior authorization. How do we identify appropriate testing, create an approval process and opportunity to audit, and ensure rules are being followed? We will also identify other areas within coverage and reimbursement where innovation would be welcomed.

*Panelists:*

*Damon Hostin, Head, Global Market Access, Illumina, Inc.*

*Paul Sheives, MS, JD, Vice President, Government Affairs, Myriad Genetics*

**3:50 Close of Conference**

3<sup>rd</sup> Annual

# Artificial Intelligence

Driving Next-Generation Innovation in Healthcare,  
Diagnostics, and Precision Medicine



May 4-5, 2026

MONDAY, MAY 4

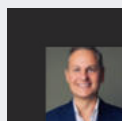
7:30 am Registration Open and Morning Coffee

## PLENARY KEYNOTE SESSION: THE AGE OF ARTIFICIAL INTELLIGENCE: PRECISION MEDICINE VENTURE AND INNOVATION

8:30 Organizer's Welcome Remarks

8:35 Chairperson's Remarks

Charity Williams, Partner, Cooley LLP



8:40 Turning Diagnostic Innovation into Scalable Reality: An End-to-End CDMO Approach 

Dejan Drljaca, CBO, Business, Helio Diag

8:45 PLENARY KEYNOTE PANEL DISCUSSION: Tech Titans, Investors, and Innovators: How AI Is Driving Precision Medicine Forward



Moderator: Charity Williams, Partner, Cooley LLP

Join leading venture investors and AI innovators as they explore how artificial intelligence is driving the next generation of personalized healthcare. This discussion will uncover emerging investment theses and the critical role of partnerships between technology platforms, startups, and providers in shaping the future of precision medicine.

Panelists:

Milad Alucozai, DrPH, Co-Founder & General Partner, Pamir Ventures

Noosheen Hashemi, Founder & CEO, January AI

Ujjwal Ratan, Head of ML and Data Science, Healthcare & Life Sciences, Amazon Web Services

Joe Shonkwiler, MD, Lead, Healthcare and Life Sciences, Venture Capital BD, Google

9:30 Networking Coffee Break with Exhibit Viewing

## AI-DRIVEN BIOMARKERS, COMPUTATIONAL PATHOLOGY, AND AGENTIC SYSTEMS FOR CLINICAL TRIALS AND CLINICAL DECISION SUPPORT

10:10 Chairperson's Remarks

Arturo Loaiza-Bonilla, MD, Co-Founder & CMAIO, Massive Bio, Inc.

10:15 AI-Enabled Multidisciplinary Oncology: Multi-Omic Intelligence, Agentic Workflows, and the Clinical-Trial Enrollment Paradox

Arturo Loaiza-Bonilla, MD, Co-Founder & CMAIO, Massive Bio, Inc.

AI-enabled multidisciplinary oncology is advancing rapidly through the integration of pathology, imaging, genomics, and molecular diagnostics. Building on concepts from the ASCO Educational Book, this presentation highlights how multi-agent frameworks—SYNERGY-AI OS and Reticulum Nexus—unify multi-omic data and streamline care. Practical cancer applications will be shown, including core concepts, AI in imaging and

pathology, biomarker-driven decision support and resolving the clinical-trial enrollment paradox through AI-driven prescreening and workflow automation.

10:30 From Diagnostic Development to Test Commercialization: How AI and Collaborative Innovation are Transforming Digital Pathology

Paul Beresford, PhD, Senior Vice President, BioPharma Partnerships, PathAI

AI is reshaping the full lifecycle of digital diagnostics from biomarker discovery through development, regulatory approval, commercialization, and clinical adoption. Foundation models accelerate progress by improving accuracy at the outset and reducing data and validation requirements. These advances, combined with close collaboration across pathology, biopharma, and diagnostic organizations, enable scalable and trusted clinical solutions that enhance the effectiveness of pathologists and streamline laboratory workflows.

10:45 Computational Pathology: Is Pharma Driving an Inflection Point?

Gary Gustavsen, PhD, Partner & Managing Director, Health Advances

It seems the field has been 1-2 years away from digital pathology taking hold for the past 15 years. However, now is different. As seen with NGS and liquid biopsy, it isn't until pharma includes new technologies in clinical trials that we see a true inflection point in adoption. This presentation will highlight how the field is changing to support this paradigm shift.

11:00 PANEL DISCUSSION: AI-Driven Precision Medicine: Harnessing Biomarkers, Multimodal Data, and Agentic Systems to Accelerate Drug Development

Moderator: Arturo Loaiza-Bonilla, MD, Co-Founder & CMAIO, Massive Bio, Inc.

AI-driven precision medicine is entering a new era powered by multimodal data fusion, biomarker-guided development, and emerging agentic systems. This panel will explore how integrating genomics, imaging, pathology, and real-world data with orchestrated AI workflows accelerates target discovery, patient selection, and clinical trial execution. Leaders in the field will discuss practical deployment, regulatory considerations, and the future of adaptive, data-driven drug development.

Panelists:

Paul Beresford, PhD, Senior Vice President, BioPharma Partnerships, PathAI

Gary Gustavsen, PhD, Partner & Managing Director, Health Advances

Michael Hreczuck, Senior Vice President, Business Development, Imagen AI

Guneet Walia, PhD, Senior Director, Data Science and Digital Health, Johnson & Johnson

11:45 The Variants ClinVar Was Missing: How Amicus Therapeutics Used Literature to Increase Potential Diagnostic Yield in Fabry Disease 

Mark Kiel, CoFounder & CSO, Genomenon

In Fabry disease, patients often wait years for diagnosis not because the evidence is missing, but because it is buried and unstructured across biomedical literature. In this session, Mark Kiel, MD, PhD, shares how Amicus Therapeutics and Genomenon systematically surfaced that evidence, uncovering more than 1,300 Fabry variants, adding 534 new actionable variants to ClinVar, and showing how these findings could support an estimated 10% increase in potential new annual Fabry diagnoses in the U.S.

12:10 pm Networking Luncheon



3<sup>rd</sup> Annual  
**Artificial Intelligence**

Driving Next-Generation Innovation in Healthcare,  
Diagnostics, and Precision Medicine



May 4-5, 2026

12:50 Networking Dessert Break with Exhibit Viewing

**OPPORTUNITIES FOR AGENTIC AI TO TRANSFORM  
PRECISION MEDICINE: FROM DISCOVERY TO  
HEALTHCARE**

1:20 Chairperson's Remarks

*Vikram Chaudhery, PhD, Partner, Genoa Ventures*

1:25 Agentic AI for Precision Medicine: Integrating Multi-Omics,  
Clinical Guidelines, and Real-World Evidence

*Mike Zack, MD, PhD, CEO & Co-Founder, PGxAI*

Integrating agentic AI architectures with multi-omic data and clinical knowledge remains a major challenge in delivering reliable precision-medicine recommendations. This session examines practical approaches for unifying genomic, transcriptomic, and metabolomic signals with guidelines, FDA label logic, and real-world evidence. It highlights opportunities and technical considerations for scalable, privacy-preserving deployment and outlines how such systems can improve therapeutic decisions across diverse clinical environments.

1:40 Reimagining Evaluation Frameworks to Unlock the Potential of  
Agentic AI in Precision Medicine

*Dave Steiner, MD, PhD, Clinical Research Scientist, Google*

1:55 Presentation to be Announced

2:10 PANEL DISCUSSION: Opportunities for Agentic AI to  
Transform Precision Medicine: From Discovery to Healthcare

*Moderator: Vikram Chaudhery, PhD, Partner, Genoa Ventures*

*Panelists:*

*Ann DeWitt, PhD, General Partner, Engine Ventures*

*Rajesh Ramaswamy, PhD, Senior Vice President, Head of Machine Learning and Artificial Intelligence Strategy, Sail Biomedicines*

*Dave Steiner, MD, PhD, Clinical Research Scientist, Google*

*Mike Zack, MD, PhD, CEO & Co-Founder, PGxAI*

2:55 Sponsored Presentation (Opportunity Available)

3:20 Networking Refreshment Break with Exhibit Viewing

**PLENARY KEYNOTE SESSION**

3:50 Chairperson's Remarks

*Mara G. Aspinall, Partner, Illumina Ventures; Professor of Practice, Arizona State University*

3:55 Presentation to be Announced

4:25 PLENARY KEYNOTE PANEL DISCUSSION: The Tipping  
Point: CEOs on the Future of Precision Medicine



*Moderator: Mara G. Aspinall, Partner, Illumina Ventures; Professor of Practice, Arizona State University*

As precision medicine accelerates across oncology, population health, and consumer diagnostics, industry leadership is critical to translating innovation into real-world impact. In this session, Mara Aspinall hosts a CEO panel for a candid discussion on the technologies reshaping early detection, decentralized testing, genomic architecture analysis, and the expanding role of AI in powering more accurate and accessible care.

*Panelists:*

*Lisa Alderson, CEO, Adela, Inc.*

*Julia Cheek, CEO and Founder, Everlywell*

5:15 Networking Welcome Reception with Exhibit Viewing

6:15 Close of Day

**TUESDAY, MAY 5**

8:00 am Registration Open and Morning Coffee

**PLENARY KEYNOTE SESSION**

8:30 Chairperson's Remarks

*Mara G. Aspinall, Partner, Illumina Ventures; Professor of Practice, Arizona State University*

8:35 PLENARY KEYNOTE PANEL DISCUSSION: Intelligence &  
Impact: The Age of Diagnostic Innovation



*Moderator: Mara G. Aspinall, Partner, Illumina Ventures; Professor of Practice, Arizona State University*

Diagnostics is entering a moment of rapid change, fueled by new technologies, evolving patient needs, and the growing influence of AI. In this keynote session, Mara hosts a panel of industry leaders to discuss how they are driving innovation within their own organizations—from advancing early detection to expanding decentralized testing and building smarter, AI-enabled laboratory systems. The conversation will explore the practical steps these leaders are taking today.

*Panelists:*

3<sup>rd</sup> Annual  
**Artificial Intelligence**

Driving Next-Generation Innovation in Healthcare,  
Diagnostics, and Precision Medicine



May 4-5, 2026

*William G. Morice II, MD, PhD, President & CEO, Mayo Clinic Laboratories; Professor & Past Chair, Department of Laboratory Medicine and Pathology, Mayo Clinic; Chair, American Clinical Laboratory Association Board of Directors*  
*Jenny Rooke, PhD, Managing Director, Genoa Ventures*  
*Ajit Singh, PhD, CEO, Harbinger Health*  
*Megann Vaughn Watters, Vice President, New Ventures & Strategic Alliances, Labcorp*

**9:20 Transition to Sessions**

**ADVANCES IN ARTIFICIAL INTELLIGENCE AND MULTI-OMIC ANALYSIS ENABLING NEXT-GEN PRECISION MEDICINE**

**9:25 Chairperson's Remarks**

*Ben Busby, PhD, Global Alliances Manager, Omics, NVIDIA*

**9:30 AI for Precision Medicine and Drug Target Discovery**

*Kyle Farh, MD, PhD, Vice President & Distinguished Scientist, Artificial Intelligence Lab, Illumina*

**9:45 Gemini Digital Twins, Deep Biological Knowledge, and the Future of Precision Medicine**

*Colin Hill, CEO, Aitia*

The realization of precision medicine in the multiomics age is slower than initially envisioned, primarily due to our still-incomplete knowledge of the complex biological circuitry underlying human health and disease. This is changing, thanks to the convergence of computational power, massive multimodal datasets, and causal AI, resulting in Gemini Digital Twins that accurately model any disease and accelerate precision medicine discovery and development (neurodegeneration and oncology examples will be presented).

**10:00 Re-Imagining Disease Risk Prediction with Whole-Genome Based PRS: Driving Earlier, Cost-Effective Care while Improving Outcomes**

*Premal Shah, PhD, CEO, MyOme*

Whole-genome-derived PRS and AI-driven risk models are transforming proactive care. The session reviews advances in accuracy, population-health applications, and clinical workflows that enable earlier detection and targeted interventions. The focus is on how these innovations reduce downstream costs, improve outcomes, and support large-scale preventive health strategies across diverse patient populations.

**10:15 From Single Cells to Therapeutic Insight: AI-Driven Multi-Omic Data for Drug Discovery**

*Amirali Kia, PhD, Vice President, Artificial Intelligence and Data Science, Element Biosciences*

Element Biosciences' AVITI24 enables true single-cell multi-omic profiling, capturing transcriptomic, proteomic, and morphological data from the same cell. This integrated view provides deep insight into cellular machinery and responses to perturbations at pathway-level resolution. We present AI-driven approaches that leverage pseudo-bulk representations of single-cell data to reduce noise while preserving biological signal. By mapping pathway activation and deactivation across perturbations, this framework enables systematic profiling and prediction of combinatorial effects.

**10:30 Networking Coffee Break with Exhibit Viewing**

**ADVANCES IN ARTIFICIAL INTELLIGENCE AND MULTI-OMIC ANALYSIS ENABLING NEXT-GEN PRECISION MEDICINE (CONT.)**

**11:10 Chairperson's Remarks**

*Ben Busby, PhD, Global Alliances Manager, Omics, NVIDIA*

**11:15 Resources for Accelerating Biological and Biomedical Data Science: Thoughts about What We Are Missing for Clustering Multifactorial Disease States and Getting Solutions into the Clinic**

*Ben Busby, PhD, Global Alliances Manager, Omics, NVIDIA*

Moving into the next thirty years of genomic analysis, it is time to expand from single gene-disease relationships. We must examine the context of variants, both in their haploblocks and the polygenic and environmental interactions that affect their function. Similarly on the phenotypic side, we need data storage mechanisms that can capture contextualized phenotypic information. We will explore how accelerated computation is reshaping the landscape of biobank-scale datasets.

**11:30 Adaptive Intelligence in Medicine: Translating Biomarkers to Actionable Care**

*Andrea Bild, PhD, Director, Cancer Systems Biology Institute, Professor, Medical Oncology & Therapeutics, City of Hope Cancer Center*

This presentation will discuss how cutting-edge biomarker discovery and AI modeling are reshaping precision medicine. The discussion will highlight emerging methods that integrate dynamic biomarker signatures with adaptive machine-learning systems to support real-time clinical decision-making. Attendees will gain insight into how next-generation AI can accelerate diagnostics, personalize therapy, and strengthen the resilience of healthcare delivery.

**11:45 PANEL DISCUSSION: Advances in Artificial Intelligence and Multi-Omic Analysis Enabling Next-Gen Precision Medicine**

*Moderator: Ben Busby, PhD, Global Alliances Manager, Omics, NVIDIA*

*Panelists:*

*Alex Aravanis, MD, PhD, CEO, Moonwalk Biosciences*

*Kyle Farh, MD, PhD, Vice President & Distinguished Scientist, Artificial Intelligence Lab, Illumina*

*Jimmy ChengHo Lin, PhD, CSO, Freenome, Inc.*

*Premal Shah, PhD, CEO, MyOme*

**12:45 pm Transition to Lunch**

**12:50 Luncheon Presentation (Sponsorship Opportunity Available) or Enjoy Lunch on Your Own**

**1:15 Refreshment & Dessert Break with Exhibit Viewing**

**AI FOR PRECISION ONCOLOGY**

**2:00 Chairperson's Remarks**

*Ben Busby, PhD, Global Alliances Manager, Omics, NVIDIA*

**2:05 Oncology Biomarker Intelligence: From Discovery to Patient Selection and Deployment**

3<sup>rd</sup> Annual  
**Artificial Intelligence**

Driving Next-Generation Innovation in Healthcare,  
Diagnostics, and Precision Medicine

May 4-5, 2026



*Dean Bitan, CEO, Imagen AI*

This talk will present Imagen's Multimodal Biomarker Intelligence approach for drug development, designed to support the biomarker continuum across discovery, patient selection, and deployment. By integrating histology foundation models with DNA/RNA and longitudinal clinical outcomes, Imagen enables early response prediction, composite continuous scoring for patient stratification, and translation of biomarkers into deployable identification workflows. The session will highlight how this continuum reduces late-stage biomarker risk and improves predictive confidence.

**2:20 Explainable AI and Transcriptomic Network Analysis in Precision Oncology**

*Thomas Brown, MD, CMO, Sygnomics*

**2:35 Scalable Clinical Inference and Multi-Modal AI Modeling for Predictive Insights from Real-World Oncology Data**

*Anshu Jain, MD, Chief Business and Clinical Officer, Zephyr AI*

We present a modular AI framework that transforms unstructured real-world oncology data into predictive insights using clinical, genomic, and image-based inputs. The platform supports drug response prediction, immune therapy stratification, and transcriptomic reconstruction from routine diagnostics. Validated across enterprise-scale real-world cohorts, these models uncover clinically meaningful signal from sparse data—enabling precision treatment decisions without new biomarker panels or custom assays.

**2:50 When Evidence Breaks: The New Paradigm for Precision Medicine**

*Steve Brown, Founder & CEO, CureWise*

Precision medicine is fragmenting disease into molecular subtypes too small for traditional evidence frameworks, leaving many patients and clinicians without guidance. When trials become impossible and the evidence base

breaks, AI offers a new paradigm by integrating diagnostics, mechanistic biology, and real-world signals to generate individualized, continuously updated insight. My own rare cancer case illustrated this shift. Medicine must now evolve from static, cohort-based proof to dynamic, patient-level learning.

**3:05 An AI Platform for Predictive Biomarkers to Benefit Every Cancer Patient**

*Rafael Rosengarten, PhD, CEO, Genialis*

Genialis is building an AI therapeutic recommendation engine for every cancer patient. We call this engine the "Genialis Supermodel," comprised of a transcriptomics Foundation Model and a comprehensive library of machine learning algorithms that cover all therapeutically relevant cancer biology. The Supermodel yields a new class of biomarkers to match patients with promising new therapies such as KRAS inhibitors, immune agents, and all other targets/drugs.

**3:20 How Functional Precision Medicine and AI Can Transform Cancer Treatment**

*James Foote, CEO, First Ascent Biomedical*

Functional Precision Medicine (FPM) redefines precision oncology by testing live tumor cells against hundreds of FDA-approved drugs to guide individualized therapy. This session explores how integrating functional data with genomic insights enhances predictive accuracy, accelerates clinical decision-making, and bridges translational gaps. Real-world clinical results demonstrate FPM's potential to expand precision medicine access, improve outcomes, and inform regulatory and reimbursement pathways for broader implementation.

**3:35 Close of Conference**

“

TRICON is an excellent conference with an excellent blend of hot topics and exciting technologies! ”

*Resident, Cedar-Sinai*



# Precision Medicine

Clinical Implementation of Personalized Medicine, Liquid Biopsy,  
Biomarkers, and Companion Diagnostics

May 4-5, 2026

MONDAY, MAY 4

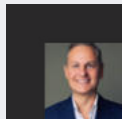
7:30 am Registration Open and Morning Coffee

## PLENARY KEYNOTE SESSION: THE AGE OF ARTIFICIAL INTELLIGENCE: PRECISION MEDICINE VENTURE AND INNOVATION

8:30 Organizer's Welcome Remarks

8:35 Chairperson's Remarks

Charity Williams, Partner, Cooley LLP



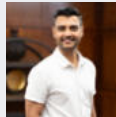
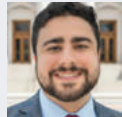
8:40 Turning Diagnostic Innovation into Scalable Reality: An End-to-End CDMO Approach

Dejan Drljaca, CBO, Business, Helio Diag

HELIODIAG

8:45 PLENARY KEYNOTE PANEL DISCUSSION:

Tech Titans, Investors, and Innovators: How AI Is Driving Precision Medicine Forward



Moderator: Charity Williams, Partner, Cooley LLP

Join leading venture investors and AI innovators as they explore how artificial intelligence is driving the next generation of personalized healthcare. This discussion will uncover emerging investment theses and the critical role of partnerships between technology platforms, startups, and providers in shaping the future of precision medicine.

Panelists:

Milad Alucozai, DrPH, Co-Founder & General Partner, Pamir Ventures

Noosheen Hashemi, Founder & CEO, January AI

Ujjwal Ratan, Head of ML and Data Science, Healthcare & Life Sciences, Amazon Web Services

Joe Shonkwiler, MD, Lead, Healthcare and Life Sciences, Venture Capital BD, Google

9:30 Networking Coffee Break with Exhibit Viewing

## PRECISION MEDICINE AND DRUG DEVELOPMENT IN THE AGE OF AI

10:10 Chairperson's Remarks

Okan Ekinci, MD, MBA, CMIO & Senior Vice President Digital Technology, Roche Information Solutions

10:15 Precision Medicine and Drug Development in the Age of AI

Ian McCaffery, PhD, Vice President and Global Head of Precision Medicine, Translational Research & Companion Diagnostics, AbbVie

10:30 AI in Drug Development: Using AI to Find the Right Patients for the Right Drugs

Richard Klinghoffer, PhD, Senior Vice President & Head, Systems Biology, Tempus

Discover how AI-powered lab-in-the-loop techniques are revolutionizing drug discovery by identifying and validating novel therapeutic targets. This presentation explores how our platform enables pharmaceutical partners to query real-world data for patients predicted to respond to inhibition of entirely new targets and early-stage developmental assets—even those not yet in clinical trials. Learn how this approach accelerates target validation and patient stratification, bridging the gap between computational prediction and clinical reality.

10:45 PANEL DISCUSSION: Precision Medicine and Drug Development in the Age of AI

Moderator: Okan Ekinci, MD, MBA, CMIO & Senior Vice President Digital Technology, Roche Information Solutions

Panelists:

Ian McCaffery, PhD, Vice President and Global Head of Precision Medicine, Translational Research & Companion Diagnostics, AbbVie

Richard Klinghoffer, PhD, Senior Vice President & Head, Systems Biology, Tempus

Jai Pandey, PhD, Head, Global Device Regulatory IVD/CDx and Digital Health, Sanofi

Cecilia Schott, PharmD, MBA, Vice President, Head of Global Precision Diagnostics - Oncology Translational Medicine, GSK

11:45 Automated High-Throughput EV Isolation Enabling Scalable Multiomics Cancer Biomarker Discovery



Minlee Kim, CTO, Genolution Inc.

Extracellular vesicles (EVs) are emerging as powerful liquid biopsy biomarkers; however, translational progress is often limited by inefficient and variable EV isolation workflows. Genolution's advanced platform delivers standardized, high-throughput EV isolation, followed by sequential extraction of proteins, miRNA, or DNA derived from isolated EVs within a single integrated automated process. This case study highlights scalable multiomics cancer biomarker discovery with improved reproducibility, automation, and reduced hands-on time.

12:10 pm Networking Luncheon

12:50 Networking Dessert Break with Exhibit Viewing

## PRECISION ONCOLOGY

1:20 Chairperson's Remarks

Susanne Munksted, Chief Precision Medicine Officer, Diaceutics

1:25 Tracking Progress in Precision Oncology: What's Changing—and What Isn't—in Implementing Precision Medicine?

Susanne Munksted, Chief Precision Medicine Officer, Diaceutics

This session unveils updated insights from the landmark 'Practice Gap' study tracking how personalized medicine is implemented in advanced non-small cell lung cancer. Building on the seven-step clinical practice gap framework, the latest analysis from Diaceutics uses new data to reveal where progress has been made—and where gaps persist—over the past four years.

1:40 Presentation to be Announced

1:55 PANEL DISCUSSION: Unlocking Precision Cancer Care: Integrating Advances in AI, Genomics, and Multi-Omics



9<sup>th</sup> Annual

# Precision Medicine

*Clinical Implementation of Personalized Medicine, Liquid Biopsy, Biomarkers, and Companion Diagnostics*

May 4-5, 2026

*Moderator: Susanne Munksted, Chief Precision Medicine Officer, Diaceutics*

This panel explores how precision oncology can be more effectively implemented by harnessing advances in AI, multi-omics, and genomics. As cancer care becomes increasingly data driven, technologies offer new ways to interpret complexity, accelerate diagnosis, and guide more targeted treatments. The discussion will examine how emerging tools can overcome current barriers, enable smarter clinical decisions, and move precision oncology closer to routine, equitable patient care.

*Panelists:*

*Ezra Cohen, MD, CMO, Oncology, Tempus Labs, Inc.*

*Steven Henck, PhD, CTO, Integrated DNA Technologies*

## 2:55 Talk Title to be Announced

*Ehab ElGaby, Chief Medical Officer, Head Companion Diagnostics, CellCarta*



## 3:20 Networking Refreshment Break with Exhibit Viewing

### PLENARY KEYNOTE SESSION

#### 3:50 Chairperson's Remarks

*Mara G. Aspinall, Partner, Illumina Ventures; Professor of Practice, Arizona State University*

#### 3:55 Presentation to be Announced

#### 4:25 PLENARY KEYNOTE PANEL DISCUSSION: The Tipping Point: CEOs on the Future of Precision Medicine



*Moderator: Mara G. Aspinall, Partner, Illumina Ventures; Professor of Practice, Arizona State University*

As precision medicine accelerates across oncology, population health, and consumer diagnostics, industry leadership is critical to translating innovation into real-world impact. In this session, Mara Aspinall hosts a CEO panel for a candid discussion on the technologies reshaping early detection, decentralized testing, genomic architecture analysis, and the expanding role of AI in powering more accurate and accessible care.

*Panelists:*

*Lisa Alderson, CEO, Adela, Inc.*

*Julia Cheek, CEO and Founder, Everlywell*

## 5:15 Networking Welcome Reception with Exhibit Viewing

## 6:15 Close of Day

TUESDAY, MAY 5

## 8:00 am Registration Open and Morning Coffee

### PLENARY KEYNOTE SESSION

#### 8:30 Chairperson's Remarks

*Mara G. Aspinall, Partner, Illumina Ventures; Professor of Practice, Arizona State University*

#### 8:35 PLENARY KEYNOTE PANEL DISCUSSION: Intelligence & Impact: The Age of Diagnostic Innovation



*Moderator: Mara G. Aspinall, Partner, Illumina Ventures; Professor of Practice, Arizona State University*

Diagnostics is entering a moment of rapid change, fueled by new technologies, evolving patient needs, and the growing influence of AI. In this keynote session, Mara hosts a panel of industry leaders to discuss how they are driving innovation within their own organizations—from advancing early detection to expanding decentralized testing and building smarter, AI-enabled laboratory systems. The conversation will explore the practical steps these leaders are taking today.

*Panelists:*

*William G. Morice II, MD, PhD, President & CEO, Mayo Clinic Laboratories;*

*Professor & Past Chair, Department of Laboratory Medicine and Pathology, Mayo Clinic; Chair, American Clinical Laboratory Association Board of Directors*

*Jenny Rooke, PhD, Managing Director, Genoa Ventures*

*Ajit Singh, PhD, CEO, Harbinger Health*

*Megann Vaughn Watters, Vice President, New Ventures & Strategic Alliances, Labcorp*

#### 9:20 Transition to Sessions

### INNOVATION IN LIQUID BIOPSY: MRD, MCD, AND BIOMARKERS

#### 9:25 Chairperson's Remarks

*Catia Verbeke, PhD, Managing Director, L.E.K. Consulting*

#### 9:30 Leveraging Multiomics and Machine Learning towards a Stepwise Approach to Multi-Cancer Screening

*Jimmy ChengHo Lin, PhD, CSO, Freenome, Inc.*

Early cancer discovery is challenging due to the heterogeneity of different cancers and even within cancers from the same organ. Freenome built a multiomics discovery platform that looks for signals along the entire central dogma—DNA, methylation, RNA, protein, immunoprofiling, extracellular vesicles, circulating cells, among others. During this talk, we will discuss clinical, scientific, and computational strategies that are critical to create the best products to benefit patients.

#### 9:45 Tissue-Resolved Multiomics from Blood: What Becomes Visible When You Know the Source

*Pierre Arsène, Founder & CEO, Mursla Bio*

Molecular profiles from blood face a dual problem: domination by blood cell-derived particles and dilution across dozens of tissue sources - a measurement gap neither bulk isolation nor larger cohorts resolve. Organ-specific extracellular vesicles, isolated via a validated surface marker panel, attribute multiomic layers to a tissue of origin. In liver disease, proteomic depth and reproducibility improve markedly, revealing disease-relevant pathways absent in bulk, while miRNA yields stronger disease associations.

9<sup>th</sup> Annual

# Precision Medicine

Clinical Implementation of Personalized Medicine, Liquid Biopsy, Biomarkers, and Companion Diagnostics

May 4-5, 2026

## 10:00 From Blood to Biology: Guiding Therapy across Chronic and Autoimmune Diseases

*Diana Abdueva, PhD, Co-Founder & CEO, Aqtual, Inc.*

Diana Abdueva, co-founder and CEO of Aqtual, will discuss how liquid biopsy, active chromatin cell-free DNA (cfDNA), and advanced biomarker analysis are expanding precision medicine beyond oncology into chronic and autoimmune diseases. She will highlight how transcriptomic, epigenetic, and protein-DNA signals from a simple blood draw can guide therapy selection, improve patient outcomes, and enable companion diagnostics.

## 10:15 Presentation to be Announced

## 10:40 Networking Coffee Break with Exhibit Viewing

## INNOVATION IN LIQUID BIOPSY: MRD, MCED, AND BIOMARKERS (CONT.)

### 11:10 Chairperson's Remarks

*Catia Verbeke, PhD, Managing Director, L.E.K. Consulting*

### 11:15 The Evolving MRD Landscape in Solid and Hematologic Cancers

*Catia Verbeke, PhD, Managing Director, L.E.K. Consulting*

MRD is becoming increasingly embedded in routine care across solid and hematologic cancers. This talk provides an overview of where MRD is gaining traction across tumor types and intervention points along the patient journey, spanning perioperative through surveillance settings. It will also outline key assay modalities (NGS, PCR, flow, etc.) and technology approaches (tumor-informed vs tumor-naïve) and highlight how MRD is shaping therapeutic development and trial design.

### 11:30 From Diagnosis to Monitoring: Liquid Biopsy across Cancer Care

*Lisa Alderson, CEO, Adela, Inc.*

Liquid biopsy is transforming cancer diagnosis and treatment decision-making. Yet, adoption remains fragmented across disease- and treatment-specific settings. As next-generation platforms emerge with pan-tumor, longitudinal capabilities, the focus shifts toward continuous cancer management. This session highlights evolving market dynamics and how scalable liquid biopsy solutions could transform care from early detection through long-term monitoring.

### 11:45 PANEL DISCUSSION: Innovation in Liquid Biopsy: What's Next for MRD, Early Detection, and MCED?

*Moderator: Catia Verbeke, PhD, Managing Director, L.E.K. Consulting*

Liquid biopsy is becoming routine in oncology: MRD is scaling in key tumor types, single-cancer early detection is expanding beyond CRC, and MCED is gaining traction via alternative payment models (e.g., self-pay). Yet, further advances are needed to unlock the full potential of liquid biopsy to transform cancer care. This panel discusses the next wave of innovation.

*Panelists:*

*Tomasz M. Beer, MD, CMO & Vice President, Multi-Cancer Early Detection, Exact Sciences*

*Mark Gardner, MBA, Senior Vice President, Molecular Genomics and Oncology, Quest Diagnostics*

*Taylor Jensen, PhD, Vice President, Head of Science, Oncology, Labcorp*

*Jean-Francois Martini, PhD, Senior Director, BioPharma Translational Strategy & Applications, Guardant Health*

## 12:45 pm Transition to Lunch

### 12:50 LUNCHEON PRESENTATION: From Repertoire to Response: A Workflow for Mapping Antigen-Driven T and B Cell Clonotypes

*Alex Chenchik, President & CSO, Collecta Inc*

We will present an integrated immune profiling workflow that links repertoire sequencing with functional validation to rapidly identify antigen-specific T and B cell clonotypes. By combining bulk and single-cell adaptive immune receptor (AIR) profiling with T-cell/B-cell receptor chain pairing and reporter-based screening, we enable high-confidence epitope discovery for immunology applications, biomarker development and targeted immunotherapy design.

## 1:15 Refreshment & Dessert Break with Exhibit Viewing

## PRECISION MEDICINE BEYOND ONCOLOGY

### 2:00 Chairperson's Remarks

*Steve Gardner, PhD, CEO and Co-Founder, PrecisionLife*

### 2:05 Precision Diabetes: Subtyping and Managing Glucose Dysregulation Using Continuous Glucose Monitoring

*Michael Snyder, PhD, Stanford W. Ascherman Professor & Chair, Department of Genetics; Director, Center for Genomics & Personalized Medicine, Stanford University*

Nutrition impacts all aspects of health and longevity, yet responses to food are highly personalized. Using Continuous Glucose Monitoring (CGM) we demonstrate that individuals have personalized glucose responses to different carbohydrates. We show that there are subtypes of glucose dysregulation (muscle insulin resistance, beta cell defect, incretin effects) and postprandial response and mitigation depends upon the dysregulation subtype. Lifestyle—food, activity, timing—correlate with glucose levels, enabling personalized management of glucose dysregulation.

### 2:20 The Role of Biomarkers and Future State of Precision Medicine Outside of Oncology

*Arushi Agarwal, Partner, Health Advances LLC*

Biomarkers to inform clinical decisions in non-oncology indications such as Alzheimer's Disease, Parkinson's Disease, and metabolic disorders are becoming increasingly important. These conditions are unique from oncology which presents numerous opportunities, as well as a number of challenges. This talk will focus on trends in the use of biomarkers, key challenges, and a call to action for industry stakeholders.

### 2:35 Enabling Precision Health at Scale for All

*Carlos D. Bustamante, PhD, Founder & CEO, Galatea Bio*

### 2:50 AI, Clinical Data, and Multiomics for Precision Health

*Marina Sirota, PhD, Professor and Acting Director, Bakar Computational Health Sciences Institute, University of California, San Francisco*

### 3:05 Precision Prevention: Shaping the Future of Longevity

*Steve Gardner, PhD, CEO and Co-Founder, PrecisionLife*

Steve Gardner will outline how AI-led combinatorial analytics is enabling a preventative approach to complex chronic diseases. By determining lifetime risk of disease; predicting individual response to treatments, including GLP-1s; and systematically identifying disease-resilient protective genes



COLLECTA



9<sup>th</sup> Annual

# Precision Medicine

*Clinical Implementation of Personalized Medicine, Liquid Biopsy,  
Biomarkers, and Companion Diagnostics*

May 4-5, 2026

linked to healthier aging and resistance to neurodegeneration; PrecisionLife is demonstrating how mechanistic insights will power the revolution of proactive, personalized, and preventative care.

### **3:20 Beyond Oncology: The Precision-Neurology Frontier, Measuring the Biology to Define a New Standard of Care in Neurology**

*Doug Biehn, CEO, Octave Bioscience*

Precision medicine's next frontier beyond oncology. Octave Bioscience CEO Doug Biehn shares how precision neurology is advancing the field and patient care. Octave's category defining platform shifts neurodegenerative care from subjective symptom management to objective biological measurement. By applying AI enabled multivariate biomarkers to Multiple Sclerosis and Parkinson's Disease, Octave delivers clinically actionable insights that optimize treatment and establish precision neurology as the new standard of care.

### **3:35 BrainGeneBot: A GPT-Engineered Platform for Polygenic Risk Score Analysis and Interpretation in Alzheimer's Disease**

*Zhongming Zhao, PhD, Chair & Professor for Precision Health; Director, Center for Precision Health, University of Texas in Houston*

Large-scale genetic and genomic datasets have transformed the study of complex diseases, yet heterogeneity across studies and the difficulty of translating statistical associations into biological insight limit their utility. Polygenic risk scores (PGS), widely used to quantify genetic risk for conditions such as Alzheimer's disease (AD), exemplify these challenges. Here, we present BrainGeneBot, a GPT-driven chat framework designed to connect complex genetic data with biologically meaningful interpretation.

### **3:50 AI and Epigenetics-Powered Precision Cardiovascular Medicine**

*Meesha Dogan, PhD, Co-Founder & CEO, Cardio Diagnostics, Inc.*

The convergence of AI and epigenetics is redefining what's possible in cardiovascular medicine. Using AI, it is now possible to decode the dynamic molecular changes that reflect lifestyle impact alongside genetics to enable a new frontier in highly personalized prediction, prevention, and management of heart disease. This presentation will explore how the fusion of AI and epigenetics is delivering actionable intelligence for truly individualized cardiovascular prevention, diagnosis, and care optimization.

### **4:05 Close of Conference**

# Join Us in San Francisco

## HOTEL & TRAVEL INFORMATION

**Conference Venue and Hotel:**  
Hotel Nikko San Francisco  
222 Mason Street  
San Francisco, CA 94102

For hotel reservations, please go to the  
[Travel Page](#) of [TriConference.com](#)

Discounted Room Rate: \$229 s/d  
Discounted Room Rate Cut-off Date: April 6, 2026

